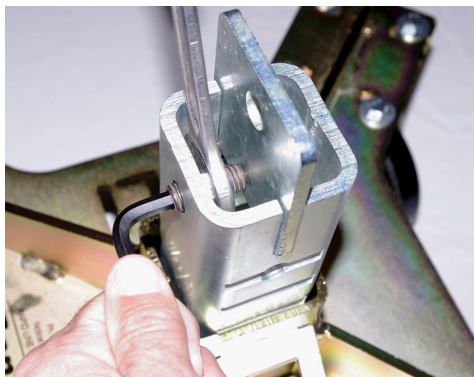
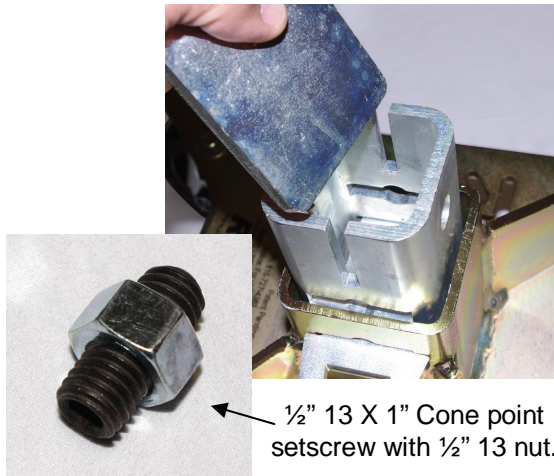


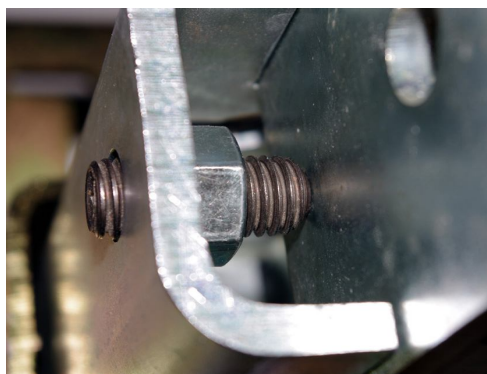


TECH SHEET: RapidGlide instructions for customer fabricated 1/4" plate fixtures

SECURING A 1/4" BLANK FIXTURE PLATE USING SETSCREW IN RAPIDGLIDE TUBE

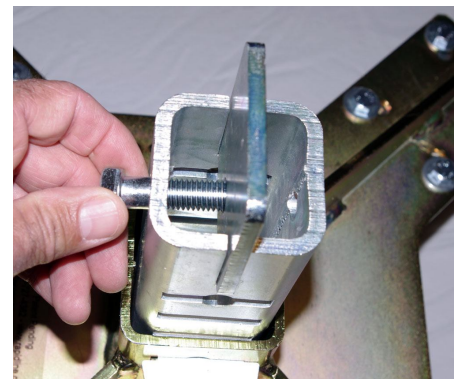
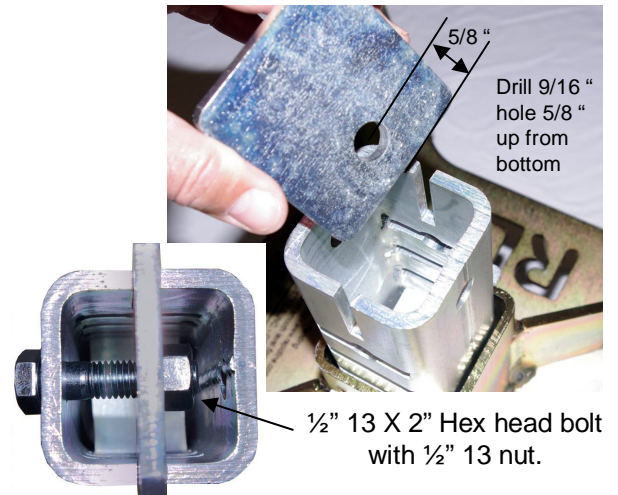


Slide 1/4" plate into tube slot making sure it is seated at bottom.

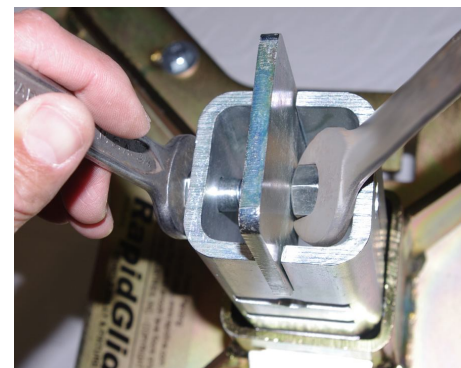


Tighten setscrew with full force – cone point will seat in plate for a secure mounting.

SECURING A 1/4" FIXTURE PLATE USING BOLT IN RAPIDGLIDE TUBE



Slide 1/4" plate into tube slot making sure it is seated at bottom and bolt holes are lined up.



Insert bolt through one side of plate and install nut – then tighten.